

Declarations & Terms

Products Update:

The listed products might be modified or discontinued without advising in advance.

Quotation:

Quotations are on Ex-Factory based Shenzhen China in currency of USD . CORITON may adjust the prices without prior notification. The proper discount might be available depending on the purchasing volume and items of the individual orders.

Payment:

Bank Transfer and Letter of Credit ,PayPal are recommended., customers will have to pay the bank fees at both sides.

Delivery time:

Approximately 1~4 weeks after confirm the order and payment. The exact delivery date should be finally confirmed by CORITON .

Return & Exchange:

Returning or exchanging are possible within 30 days after the goods are received, on the condition that quality problems are found and approved by CORITON . Problematic products could be repaired or exchanged when they are returned to CORITON factory, provided that failures are found within the warranty period. If no faults are found by CORITON or items are out of warranty, the customers should pay for the shipping cost .

Warranty :

CORITON Provide 24 months standard warranty for the reusable products list in this catalog after the goods are received.

Legal Affairs:

The original brands or trademarks indicated in the catalogue are for the purpose of referring to the compatibility with CORITON products. They are proprietarily owned by the respective manufacturers. Customers of CORITON are advised to be aware of the patent issues. CORITON products might be involved with in the marketed areas, and are responsible for the relevant legal affairs.



Medical Wall Mount and Arm

DISTRIBUTOR:



CORITON

CORITON Instrument Co., Ltd
5/F Building C, Gold Power Industry Park,
Pingshan Dist., Shenzhen, China 518118

Tel: +86 755 89581055 Fax: +86 755 89399952
Email: info@coriton.com www.coriton.com



A CE & ISO Certified Company
A Member of Chinamedi Group

CORITON
Good Health Support



Products Series

- 1-Anesthesia Machine 01
- 2-Gas spring Arm WM800 03
- 3-Wall mount WM001E/WM300/WM500 05
- 4-Accessories for WM series wall mount 12



ISO13485



ISO9001



FDA List



National High Tech

Profile

CORITON Instrument Co., Ltd was founded in 2009 with the goal of delivering high-quality, competitively priced medical mounting solution all over the world. CORITON specializes in the design, development, manufacturing, as well as sales and services of a wide range of mounting solutions for patient monitor, ECG machine, Ultrasound machine, and computer. Our company have get FDA, ISO9001 ,CE , RoHS certificate. CORIOTN products have already sold to more than 100 countries, include America, German, France. And setup partnerships with many medical device supplier all over the world.

China Factory :
 CORITON INSTRUMENT CO., LTD.
 Add: 5F Building C, Gold Power Industry Park,
 Julongshan Grand industrial Zone, Pingshan Dist.,
 Shenzhen, China 518118
 Tel : +86 755 89581055 Email: info@coriton.com

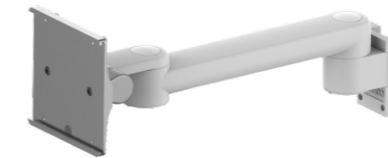
Europe Warehouse and Sales office :
 Umedwings Netherlands B.V.
 Radonstraat 28, 2718TA Zoetermeer, The Netherlands
 Tel: +31 (0) 642758955
 Email: linda@coriton.com service@umedwings.com

American Warehouse and Sales office :
 Orion Enterprises, Inc
 Address: 111 Wheeling Road Wheeling IL 60090 USA
 Tel: 847-562-1702
 Email: usa@coriton.com

Anesthesia Machine solutions



Model:WM500-100
Gas Spring Arm



Model:WM500-100-8
Monitor arm-VESA



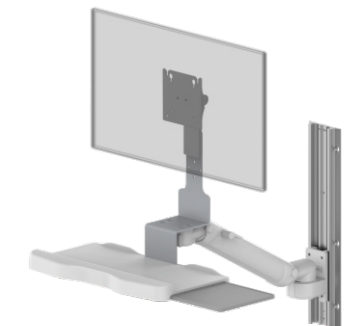
Model:WM500-200
Rmonitor arm-VESA



Model:AR102
Ventilator Support Arm



Model:AR105
Ventilator Support Arm



Model:WM800-100-06
Gas Spring Arm



Model:WM500-100-7
Rotated wall mount



Model:WM500-200
Wall mount



Model:WM800-200-XX
Gas Spring Arm

Gas Spring ARM

WM800 Series



Model:WM800-100
Gas Spring Arm



Model:WM800-100-06
Gas Spring Arm



Model:WM800-100-XX
Gas Spring Arm



Model:WM800-200-XX
Gas Spring Arm



Model:WM900-2
Screen arm



Model:ALB200
Screen arm



Model:WM900-3
Screen arm

Wall Mount

WM001E Series



Model:WM001E-100
+TR800.029-04
Wall mount



Model:WM001E-100
+TR800.029-03
Wall mount



Model:WM001E-100
+TR800.029-05
Wall mount



Model:WM001E-100
+BS004
Wall mount



Model:WM001E-100
Wall mount



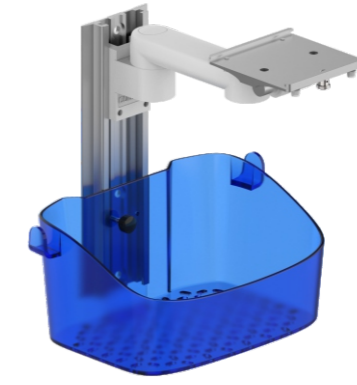
Model:WM001E-10-XX
wall mounted infusion pole

Wall Mount

WM300 Series



Model:WM300-100
+TR800.029-04
Wall mount



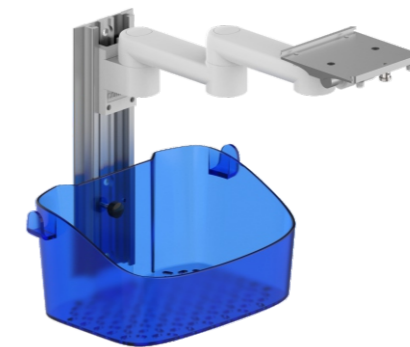
Model:WM300-100
+TR800.029-05
Wall mount



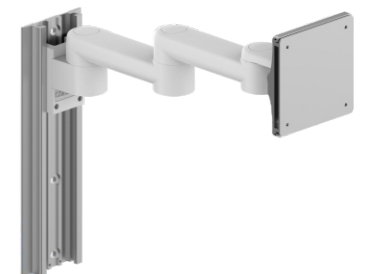
Model:WM001E-100
+C.W.B.154
Install on the bed frame fixed track



Model:WM300-200
+TR800.029-04
Wall mount



Model:WM300-200
+TR800.029-05
Wall mount



Model:WM500-200
Wall mount

Wall Mount

WM500 Series



Model:WM500-100
+TR800.029-04
Rotated wall mount



Model:WM500-100
+TR800.029-03
Rotated wall mount



Model:WM500-100
+TR800.029-05
Rotated wall mount



Model:WM500-200
Rotated wall mount



Model:WM500-100
Rotated wall mount



Model:WM500-00
Rotated wall mount



Model:WM500-100-7
Rotated wall mount



Model:WM500-100-XX
Tablet wall bracket



Model:WM500-100
+PL003+CL001
Rotated wall mount



**Model:WM500-100-8
+C.W.B.123-03**
Compatible with GE
anesthesia machines



**Model:WM500-100-8
+C.W.B.123-04**
Suitable for Drager /
GE / AEOMMED Aeon 7500A
anesthesia machine



**Model:WM500-100-8
+C.W.A.N021-13-09
+C.W.A.N021-13-10**
COMEN medical lift tower



Model:C.W.B.123-03
GE Anesthesia Machine Adapter



Model:CL001-15
Fixed pedestal



Model:C.W.B.123-04
Anesthesia machine adapter



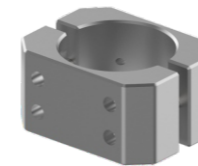
**Model:WM500-100-8
+CI001**
Mount on pole and channel



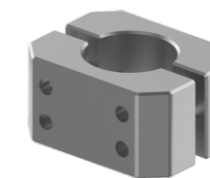
**Model:WM500-100-8
+CI001**
mount to pole $\Phi 25\text{mm}/$
 $\Phi 32\text{mm}/\Phi 50\text{mm}$



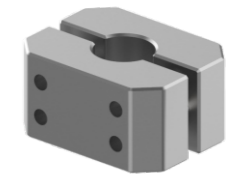
Model:WM500-100-8
Anesthesia machine
of Drager FabiusTiro
&Mindray Wato Ex-55



Model:C.W.B.029-09
Metal buckle- $\Phi 50$



Model:C.W.B.029-08
Metal buckle- $\Phi 50$



Model:C.W.B.029-07
Metal buckle- $\Phi 50$



**Model:WM500-100-8
+C.W.B.120-09-01**
Suitable for MODUEVO
Medical lifting Tower



**Model:WM500-100-8
+C.W.A.N021.13-02
+C.W.A.N021.13-03**
Suitable for Draeger
Medical hanging tower channe



Model:WM500-100-13
wall mounted infusion pole



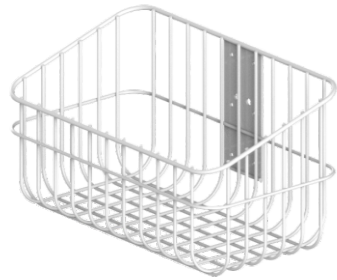
Model:C.W.B.120-09-01
Medical pendant adapter



**Model:C.W.A.N021.13-02
+C.W.A.N021.13-03**
Medical pendant adapter



Model:C.W.A.120-87-02
Hook



Model:C.W.A.H.020
285*158*148mm



Model:C.W.A.H.019
325*215*143mm



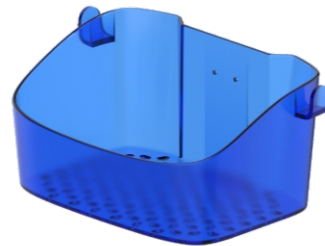
Model:C.W.A.H.020-02
Basket with lock



Model:C.W.A.H.023-01
340*213*149mm



Model:C.W.A.H.023
340*213*149mm



Model:C.W.A.H.023-02
340*213*149mm



Model:C.W.A.009
Upper wall fixing plate 320mm



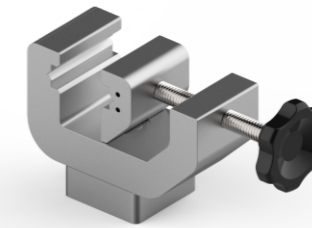
Model:C.W.A.009-1-1
Upper wall fixing plate 482mm



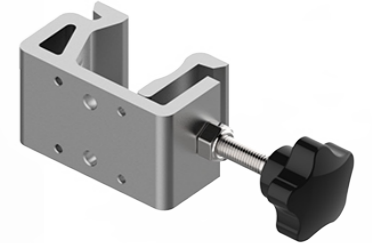
Model:C.W.A.009-08
Upper wall fixing plate 320mm



Model:PL003
Pole for extra model



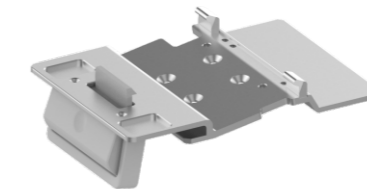
Model:CL001-15
Rotated clamp 40*15mm



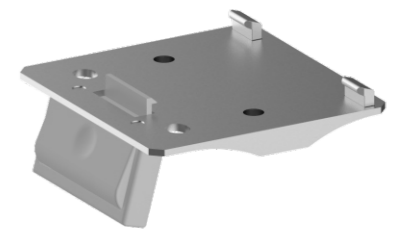
Model:CL001-00
Functional clamps 30*30mm
Model:CL001-008-02
Functional clamps 25*25mm
Model:CL001-11-01
Functional clamps 19*19/20*20mm



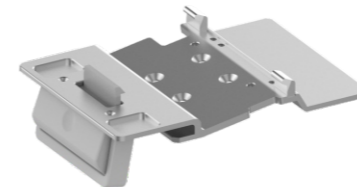
Model:C.W.B.111
Adapt to Mindray VS600/900



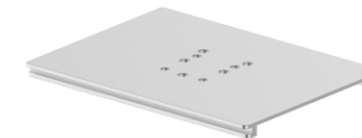
Model:C.W.B.112-01
Adapt to Mindray IPM, IMec, uMEC



Model:C.W.B.112
Adapt to Mindray IPM, iMec, uMec



Model:C.W.A.112-02
Adapter to Mindray VS600/900



Model:C.W.A.001-64
Philips adapter board



Model:C.W.B.106
+C.W.A.001-64
Adapt to Philips MP40 / MP50/MP60